

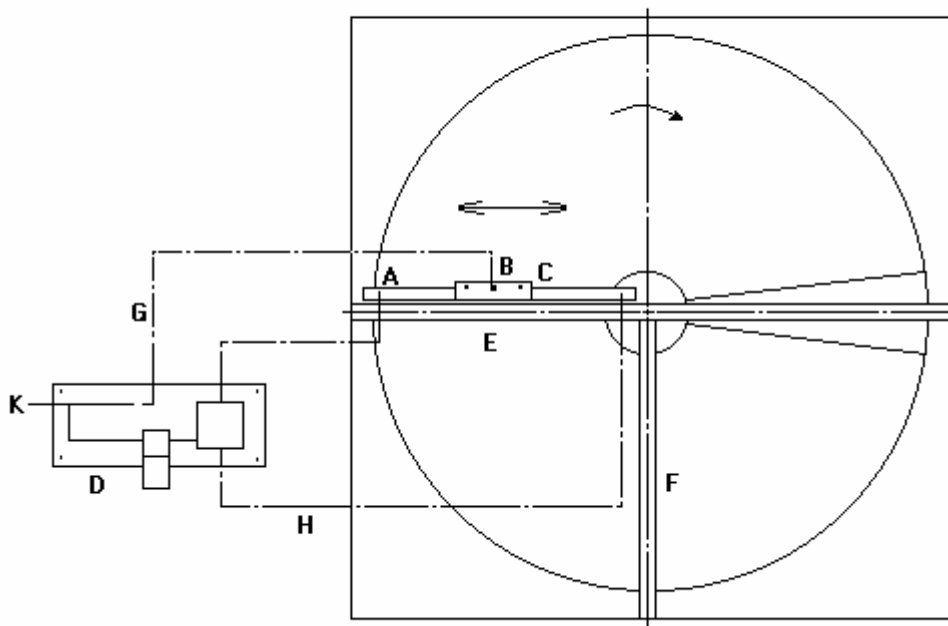
E-CLEAN 16

Pneumatic Cleaning Device

Description

E-CLEAN 16 is an automatic cleaning device working with compressed air for cleaning heat recovery wheels from dry and sticky particle.

E-CLEAN 16 consist of a compressed air-controlled cylinder (A) with sledge (B) and mounted nozzle (C). The unit is controlled via the control box (D).



- A. Cylinder
- B. Sledge
- C. Nozzle
- D. Control box
- E. Horizontal frame profile
- F. Vertical frame profile
- G. Cleaning-air
- H. Regulation-air
- K. Inlet-air

Enventus GmbH

Jägerstrasse 2 – CH-8406 Winterthur – Switzerland
E-Mail: info@enventus.com - www.enventus.com
Tel. +41 52 202 00 44 – Fax +41 52 202 00 88

Enventus AB

Hedenstorpsvägen 4 – S-555 93 Jönköping – Sweden
E-Mail: info@enventus.se - www.enventus.se
Tel. +46 36 37 56 60 – Fax +46 36 3756 68

E-CLEAN 16

Pneumatic Cleaning Device

Mounting

Mount the cylinder (A) with sledge (B) along the horizontal or vertical profile (E or F). The cylinder must be mounted so that the complete rotor radius covered by the nozzle when the sledge is moving from one side to the other.

Distance between rotor surface and nozzle shall be 10-15 mm.

Mount the control box (D) outside the ductwork.

Note that the tube to the sledge (G) must have a sufficient length so that the sledge can move to both ends of the cylinder.

Tubes to end of cylinder for control-air (H) shall be fixed.

Connection

Inlet-air (K):	max. 8 bar
Cleaning-air (G):	Ø 8 mm
Control-air (H):	Ø 6 mm

Start-up instructions

1. Adjust air pressure on inlet-air to 6-8 bar (L)
The air consumption at this pressure: for standard 3mm nozzle 400 l/min for cleaning-air and 2 l/min for control air. (special: for E-Clean 16-M: 1mm nozzle 200 l/min). Air must be free of particles.
2. sledge-speed is regulated by adjustment screws (M), one for each direction.
When adjusting, start with the screws in min. position and open slowly until right speed is reached
3. Control box for manual cleaning **E-Clean 16-M**
start and stop the unit with the black button on the magnetic valve (N)
or
Control box for automatic cleaning **E-Clean 16**
connect the external signal (230 V) to the magnetic valve (N) or manual
with start and stop the unit with the black button on the magnetic valve

Enventus GmbH

Jägerstrasse 2 – CH-8406 Winterthur – Switzerland
E-Mail: info@enventus.com - www.enventus.com
Tel. +41 52 202 00 44 – Fax +41 52 202 00 88

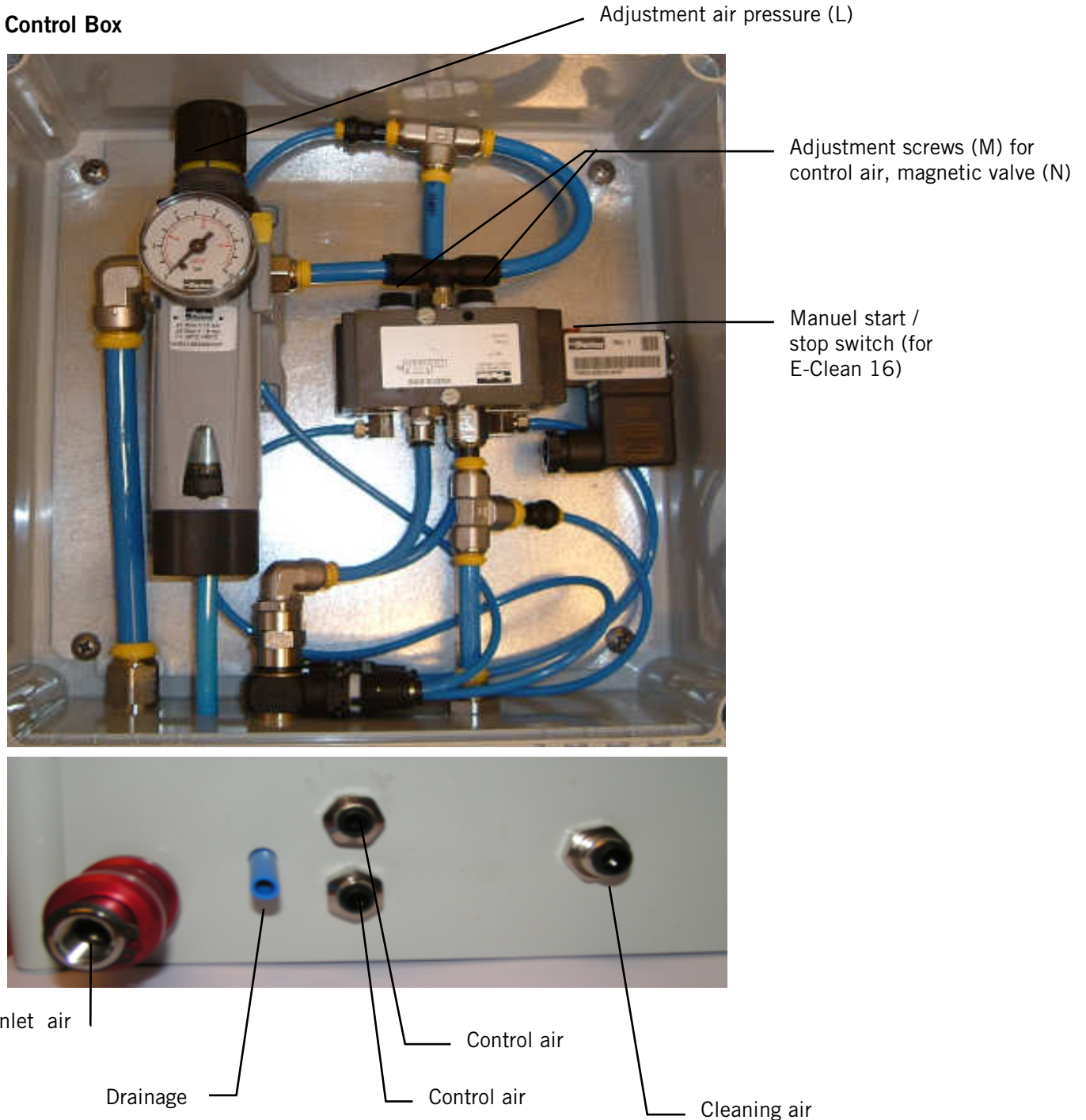
Enventus AB

Hedenstorpsvägen 4 – S-555 93 Jönköping – Sweden
E-Mail: info@enventus.se - www.enventus.se
Tel. +46 36 37 56 60 – Fax +46 36 3756 68

E-CLEAN 16

Pneumatic Cleaning Device

Control Box



Enventus GmbH

Jägerstrasse 2 – CH-8406 Winterthur – Switzerland
E-Mail: info@enventus.com - www.enventus.com
Tel. +41 52 202 00 44 – Fax +41 52 202 00 88

Enventus AB

Hedenstorpsvägen 4 – S-555 93 Jönköping – Sweden
E-Mail: info@enventus.se - www.enventus.se
Tel. +46 36 37 56 60 – Fax +46 36 3756 68